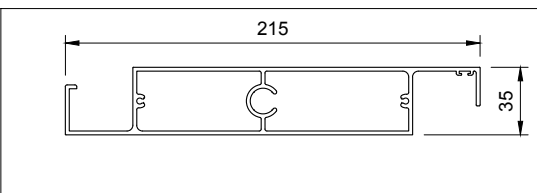
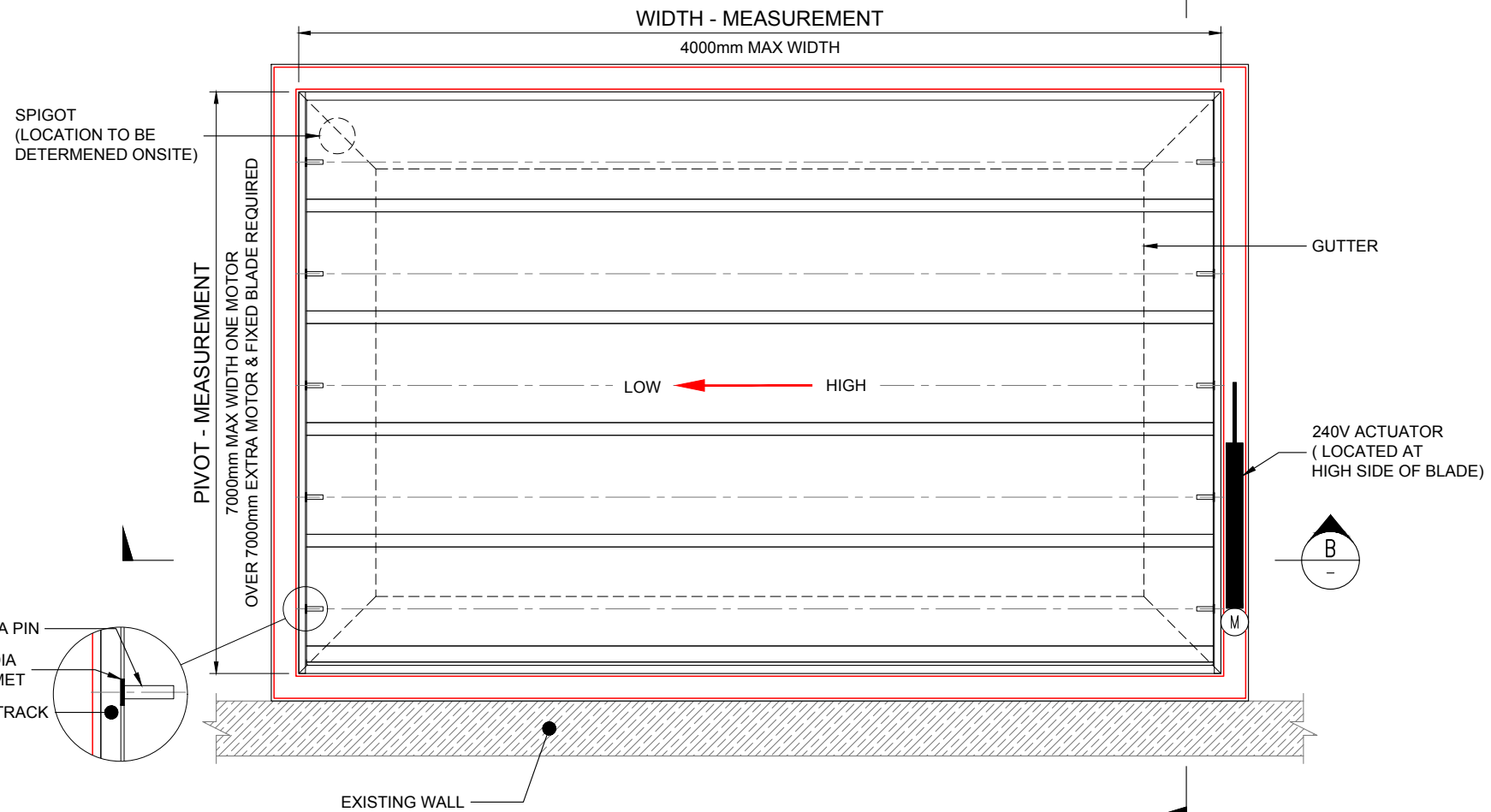
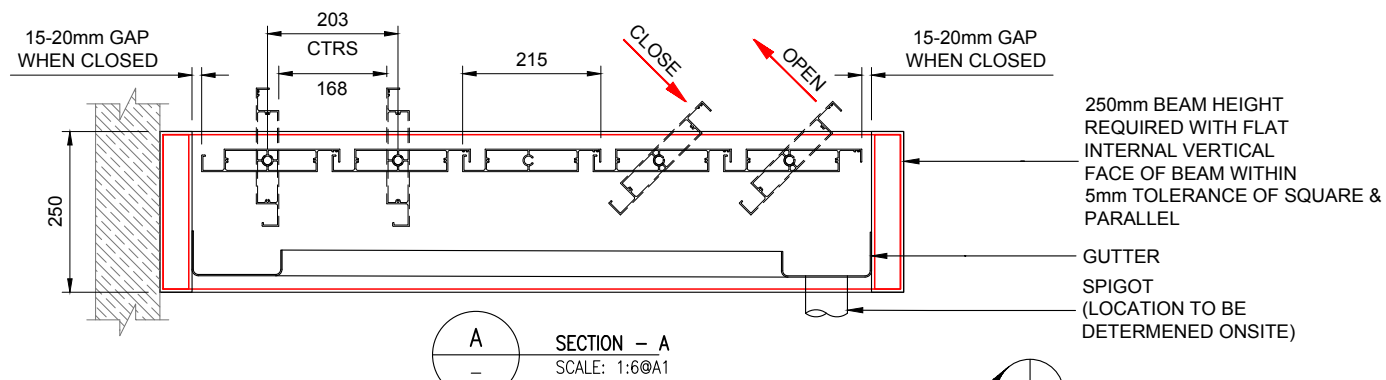


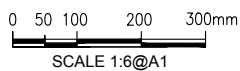
AEROTECH LINEAR 215 MODEL	
BLADE SPECIFICATIONS	
BLADE DESIGN	LINEAR
BLADE DIMENSIONS	215mm x 35mm x 3mm
BLADE MATERIAL	6016 EXTRUDED ALUMINIUM
BLADE FINISH	POWDER COATED OR ANODISED
BLADE CENTRES	203mm
BLADE OPENING	168mm
GUTTER SPECIFICATIONS	
GUTTER DESIGN	SQUARE EDGE LOW-STREAMLINE
GUTTER DIMENSIONS	140mm x 40mm x 2mm
GUTTER MATERIAL	6061 EXTRUDED ALUMINIUM
GUTTER FINISH	POWDER COATED OR ANODISED
PIVOT SPECIFICATIONS	
PIVOT TRACK	12mm x 25mm x 3mm
PIVOT TRACK MATERIAL	6061 EXTRUDED ALUMINIUM
PIVOT TRACK FINISH	POWDER COATED OR ANODISED
DRIVE ANGLE SPECIFICATIONS	
DRIVE ANGLE	25mm x 25mm x 3mm
DRIVE ANGLE MATERIAL	6061 EXTRUDED ALUMINIUM
DRIVE ANGLE FINISH	POWDER COATED OR ANODISED
PARTS AND CONNECTOR SPECIFICATIONS	
PIN SET	8mm DIA 316 MARINE GRADE STAINLESS STEEL
SPRING SET	316 MARINE GRADE STAINLESS STEEL
CONNECTOR HOUSING	100% UV STABLE HARDENED NYLON INNER
WEATHER STRIP	PVC STORM INSERTION STRIP
MOTOR & CONTROL SPECIFICATIONS	
MOTOR TYPE	GERMAN MADE LINEAR 240V ACTUATOR
CONTROLS	HARD WIRED OR REMOTE OPERATION
SENSORS	RAIN, WIND & SUN SENSORS

**AEROTECH LINEAR 215 - OPENING LOUVRED ROOF SPECIFICATION
BLADES INSTALLED PARALLEL WITH BUILDING**



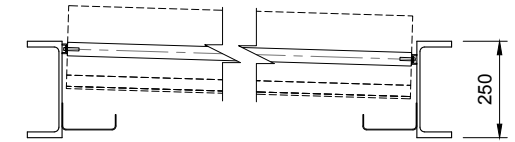
215 LOUVRE BLADE DETAIL
SCALE 1:2 @A1

LEGEND:
THIS INDICATES SUPPORT FRAME (BY OTHERS)

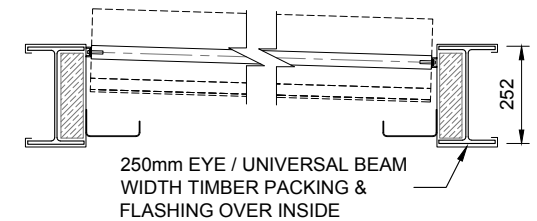


SUPPORT FRAME DESIGN OPTIONS
(AEROTECH SYSTEM EXCLUDES SUPPORT FRAME)

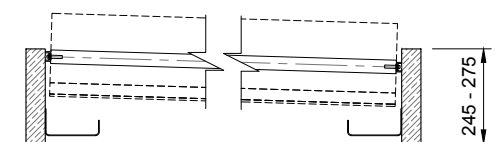
TYPE - 1
REVERSE STEEL PFC



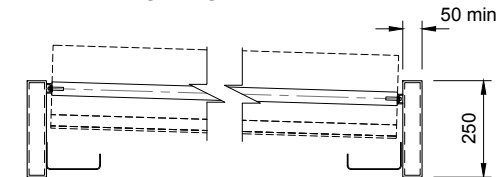
TYPE - 2
CLADDED UNIVERSAL BEAM



TYPE - 3
TIMBER FRAME



TYPE - 4
ALUMINIUM FRAME



PLEASE NOTE:
SKYMAX CAN CONSTRUCT
TYPE 4 FRAME, AS OPTIONAL

CLIENT DESIGN / MANUFACTURING APPROVAL:



APPROVED



AMEND

PRINT NAME SIGNATURE

REV	DATE	ISSUED FOR APPROVAL	DRN	APPR
A	11.05.16	ISSUED FOR APPROVAL	J.P	D.C



Skymax Australia Pty. Ltd.
SYDNEY OFFICE:
2/410 Pittwater Rd
North Manly, NSW 2100 Australia
Mob +61 4418 844 491
T +61 2 8041 6258
Web: skymax.com.au

CLIENT: SPECIFICATIONS
BLADES PARALLEL WITH
BUILDING

TITLE: AEROTECH LINEAR 215
OPENING LOUVRED ROOF

DATE: 11/05/2016

SCALE: 1:6 @A1

DRAWN: J.P

CHECKED: D.CRABB

JOB No: -

DRAWING No: SPEC - 06

ISSUE/REVISION: A