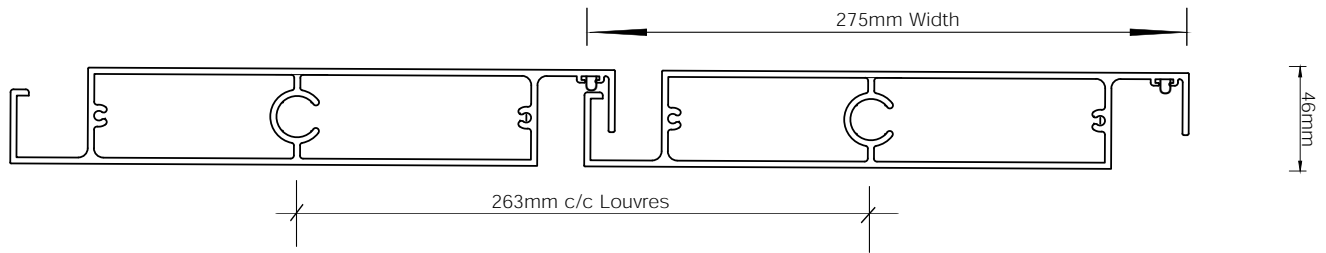


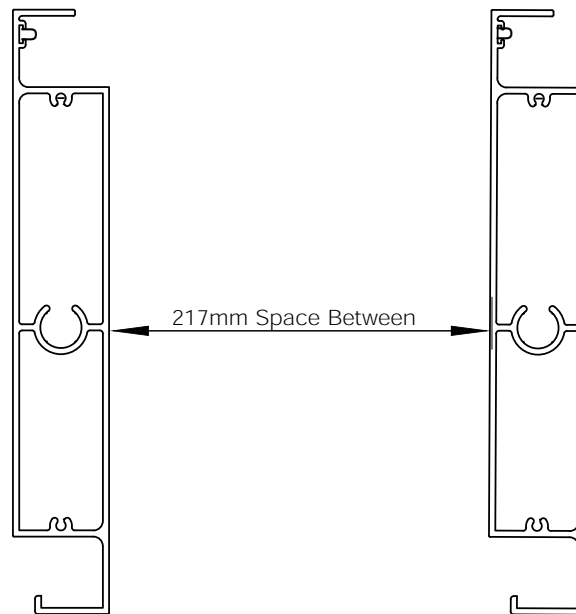
VIEWTECH OPERABLE LOUVRE SYSTEM

275 MODEL

Louvre Model	Width	Thickness	Specifications
--------------	-------	-----------	----------------



VIEWTECH – 275 MODEL 275 46

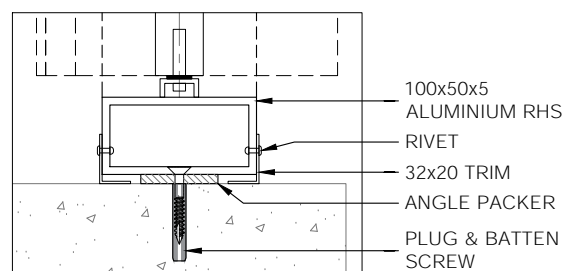
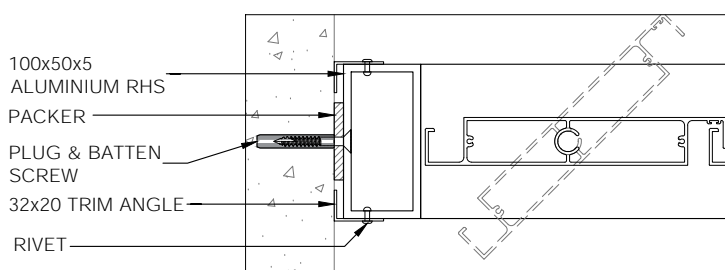


VIEWTECH – 275 MODEL

Typical Applications

Suitable substrates for this standard fixing method include precast cement and steel or timber frame.

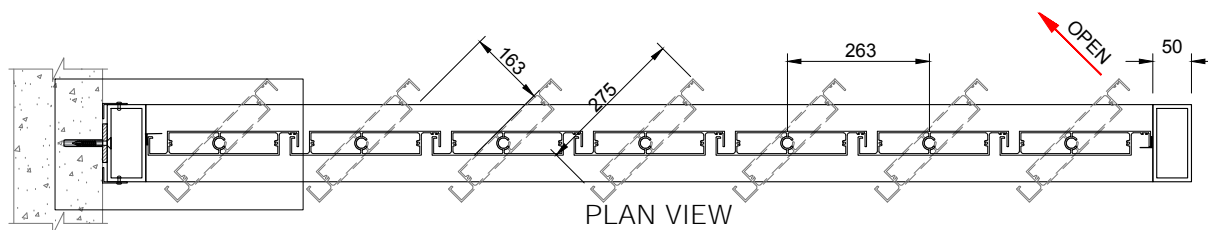
All other substrates included brickwork, Hebel or A/C panel, steel sheeting over top-hat or timber cladding will require additional engineered reinforcing.



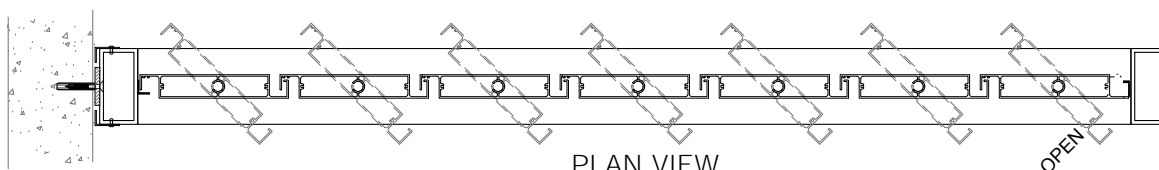
VIEWTECH OPERABLE LOUVRE SYSTEM

275 MODEL

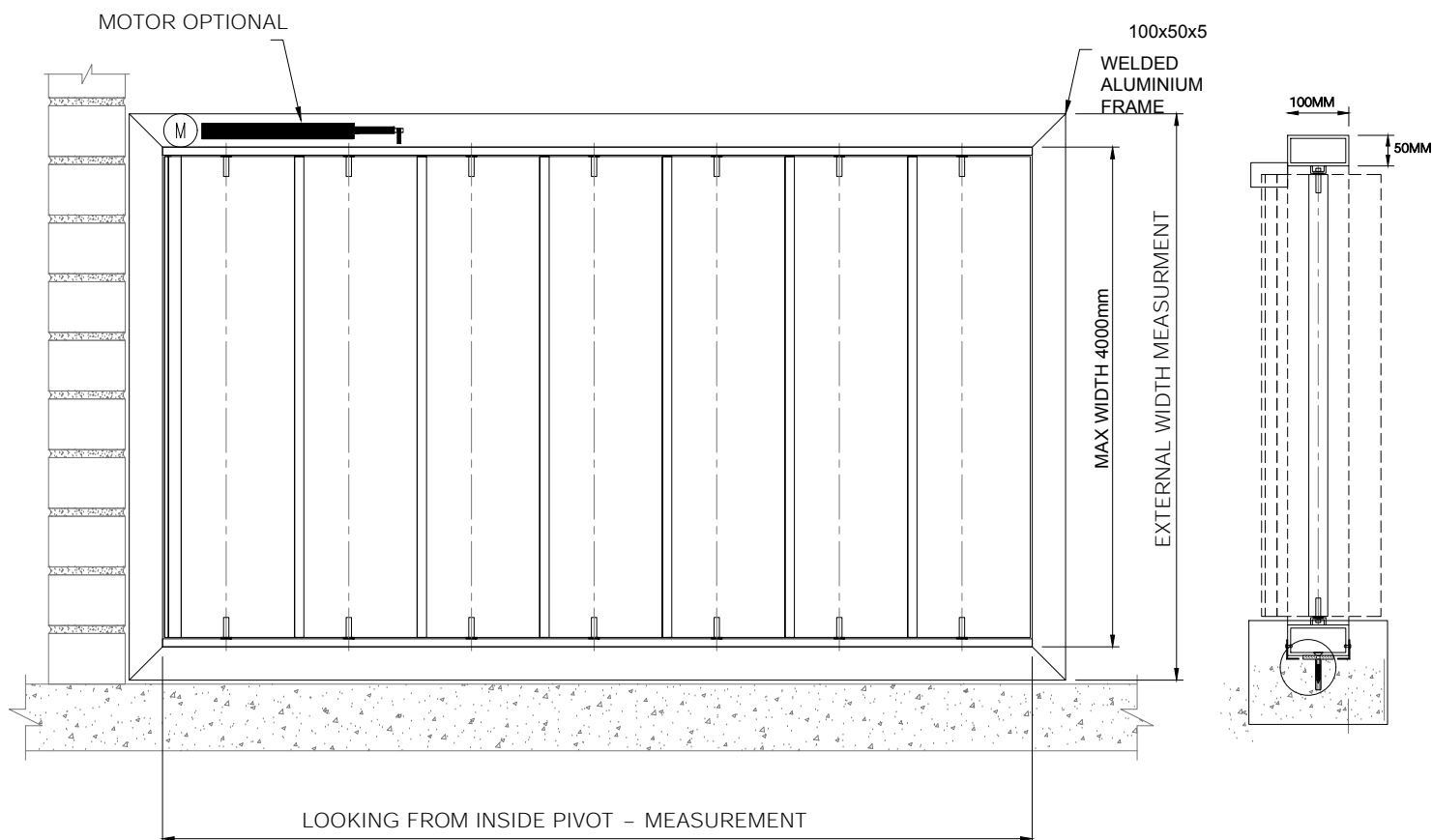
PROJECT APPLICATIONS



PLAN VIEW
BLADE OPENING DIRECTION OPTION - 2



PLAN VIEW
BLADE OPENING DIRECTION OPTION - 1



Typical Applications

NB: Suitable substrates for this standard fixing method include pre-cast cement and steel or timber frame.

All other substrates included brickwork, Hebel or A/C panel, steel sheeting over top-hat or timber cladding will require additional engineered reinforcing.

✉ info@skymax.com.au 🌐 skymax.com.au ☎ 1300 929 743

📍 Sydney Showroom - 3 Tilley Lane, Frenchs Forrest NSW 2086, Australia (By Appointment)

SKYMAX