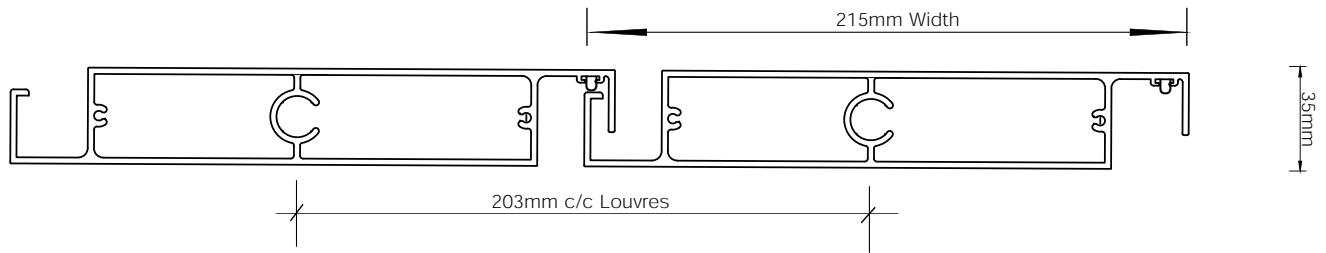


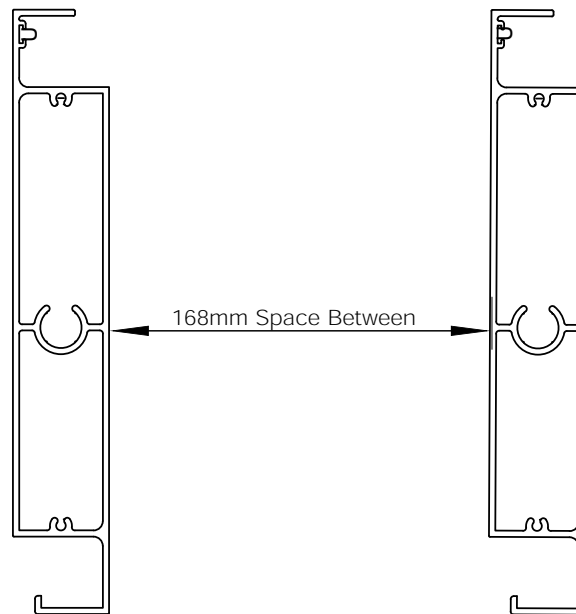
# VIEWTECH OPERABLE LOUVRE SYSTEM

215 MODEL

Louvre Model	Width	Thickness	Specifications
--------------	-------	-----------	----------------



VIEWTECH – 215 MODEL      215      35

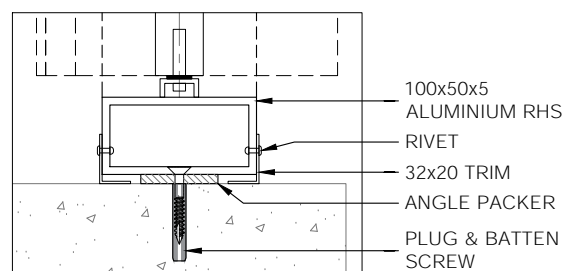
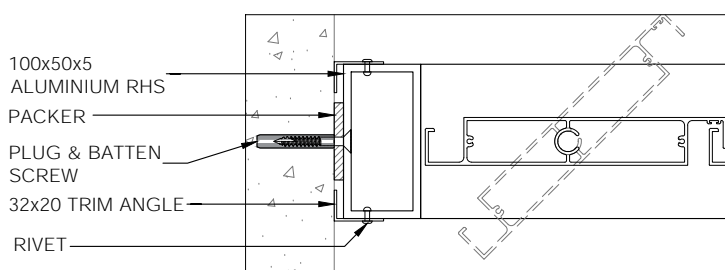


VIEWTECH – 215 MODEL

## Typical Applications

Suitable substrates for this standard fixing method include precast cement and steel or timber frame.

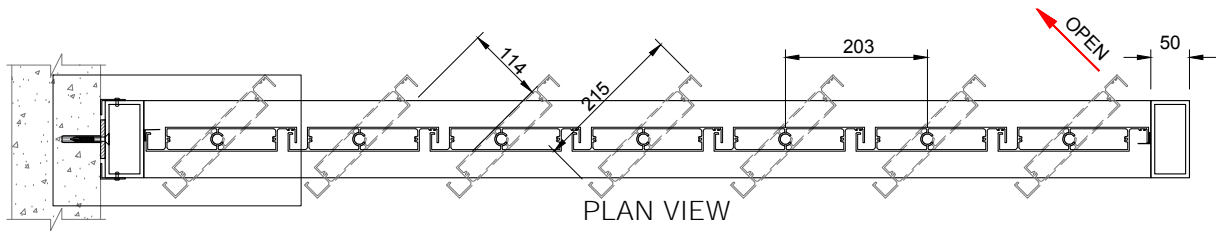
All other substrates included brickwork, Hebel or A/C panel, steel sheeting over top-hat or timber cladding will require additional engineered reinforcing.



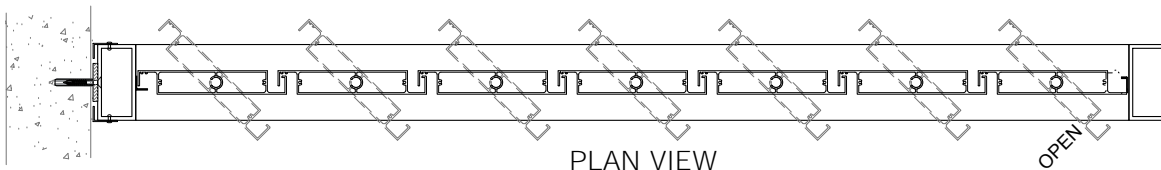
# VIEWTECH OPERABLE LOUVRE SYSTEM

215 MODEL

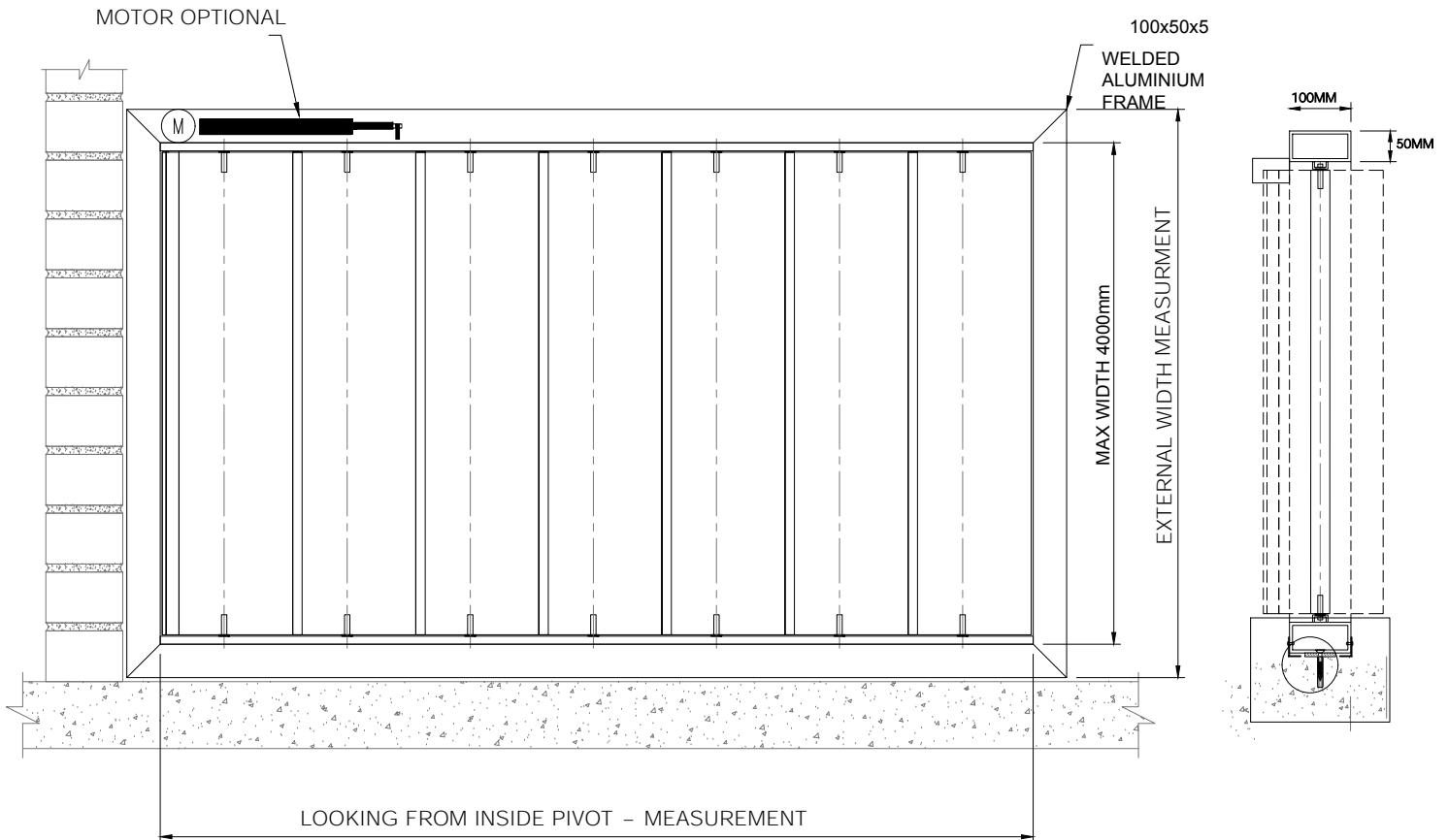
PROJECT APPLICATIONS



PLAN VIEW  
BLADE OPENING DIRECTION OPTION - 2



PLAN VIEW  
BLADE OPENING DIRECTION OPTION - 1



## Typical Applications

NB: Suitable substrates for this standard fixing method include pre-cast cement and steel or timber frame.

All other substrates included brickwork, Hebel or A/C panel, steel sheeting over top-hat or timber cladding will require additional engineered reinforcing.