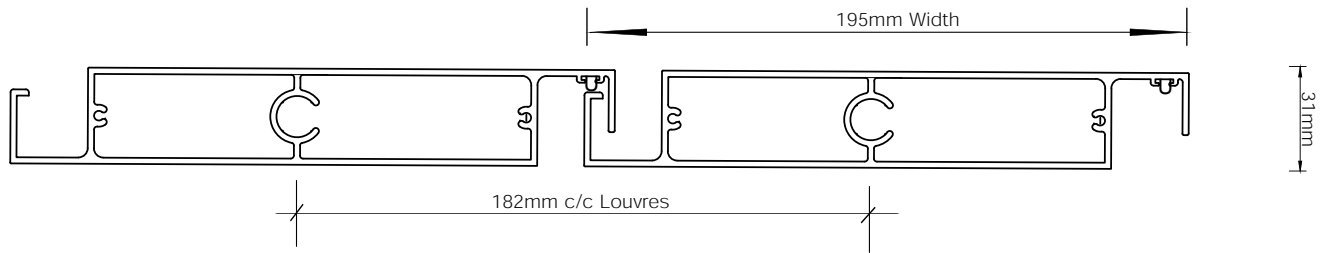


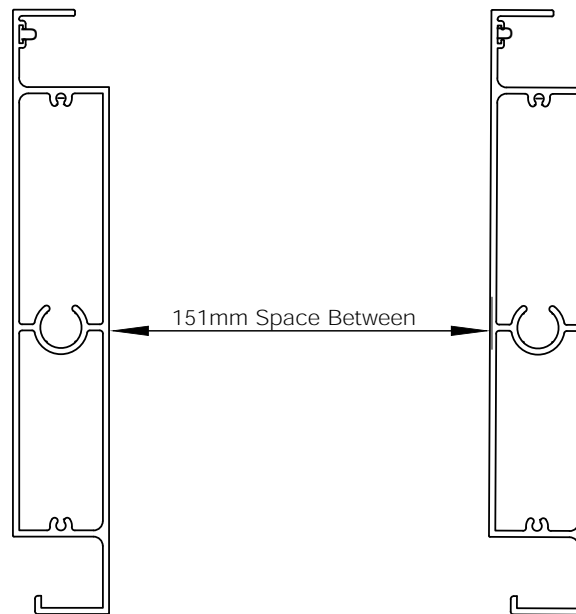
VIEWTECH OPERABLE LOUVRE SYSTEM

195 MODEL

Louvre Model	195	Width	Thickness	Specifications
--------------	-----	-------	-----------	----------------



VIEWTECH – 195 MODEL 195 31

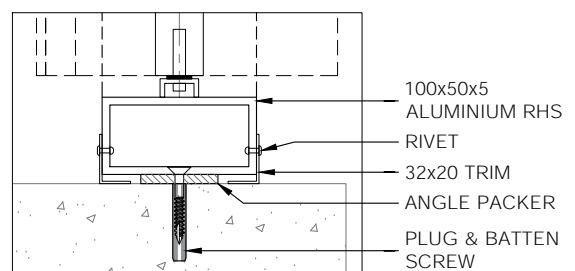
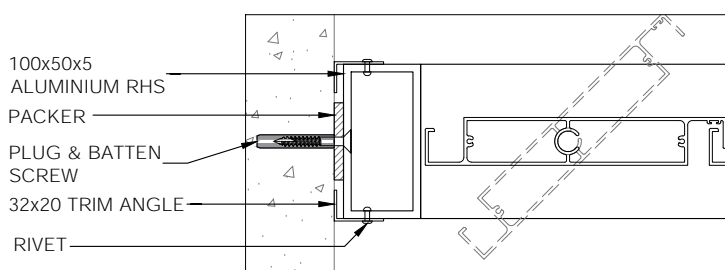


VIEWTECH – 195 MODEL

Typical Applications

Suitable substrates for this standard fixing method include pre-cast cement and steel or timber frame.

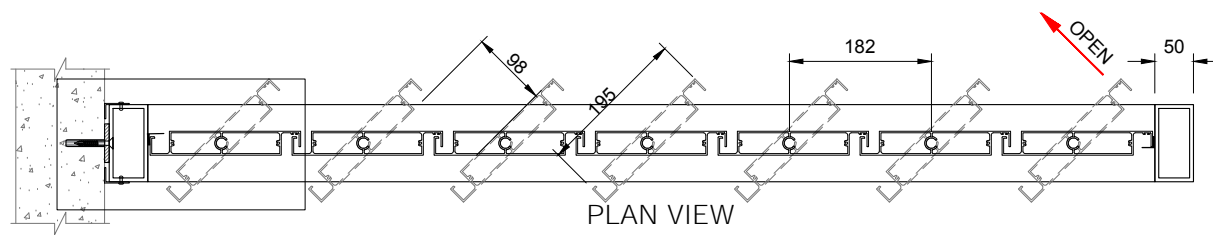
All other substrates included brickwork, Hebel or A/C panel, steel sheeting over top-hat or timber cladding will require additional engineered reinforcing.



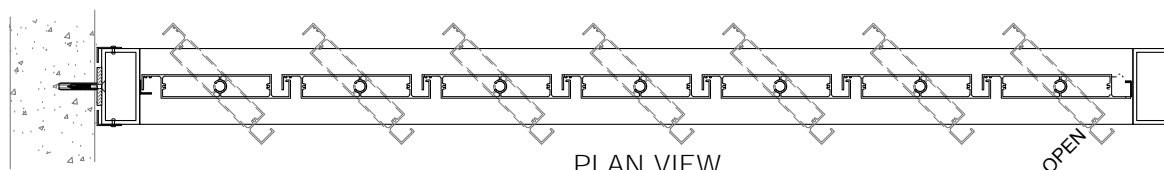
VIEWTECH OPERABLE LOUVRE SYSTEM

195 MODEL

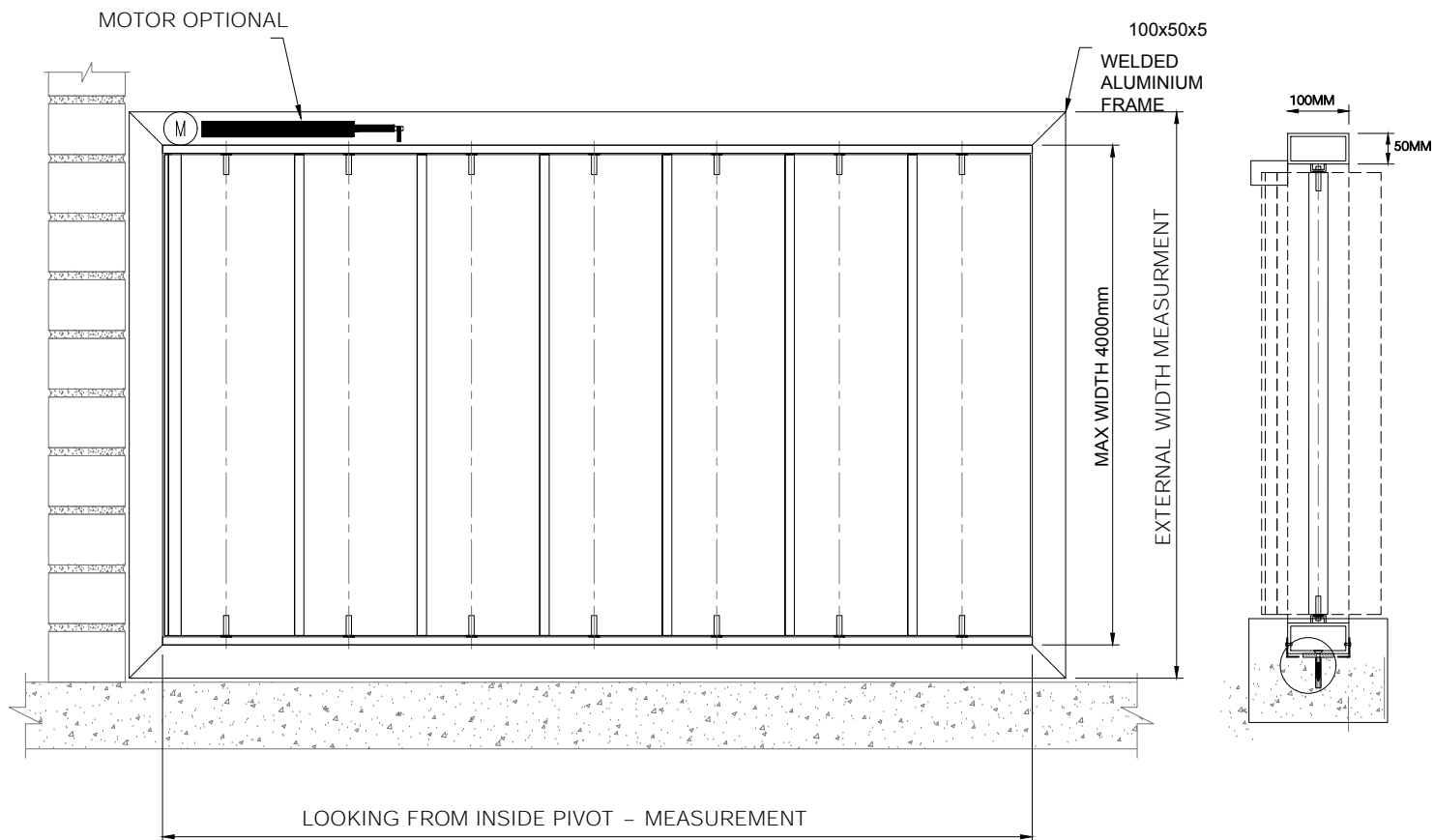
PROJECT APPLICATIONS



PLAN VIEW
BLADE OPENING DIRECTION OPTION - 2



PLAN VIEW
BLADE OPENING DIRECTION OPTION - 1



Typical Applications

NB: Suitable substrates for this standard fixing method include pre-cast cement and steel or timber frame.

All other substrates included brickwork, Hebel or A/C panel, steel sheeting over top-hat or timber cladding will require additional engineered reinforcing.

✉ info@skymax.com.au 🌐 skymax.com.au 📞 1300 929 743

📍 Sydney Showroom - 3 Tilley Lane, Frenchs Forrest NSW 2086, Australia (By Appointment)

SKYMAX