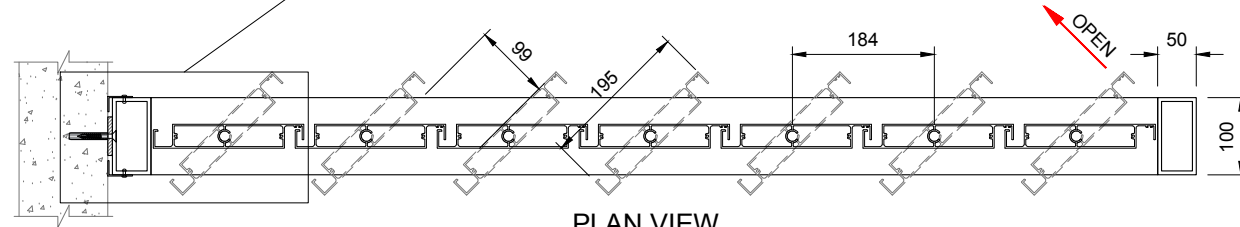
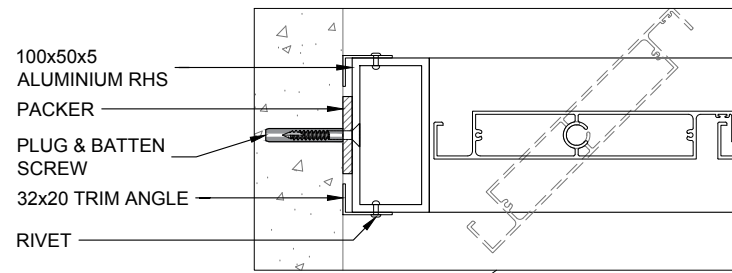
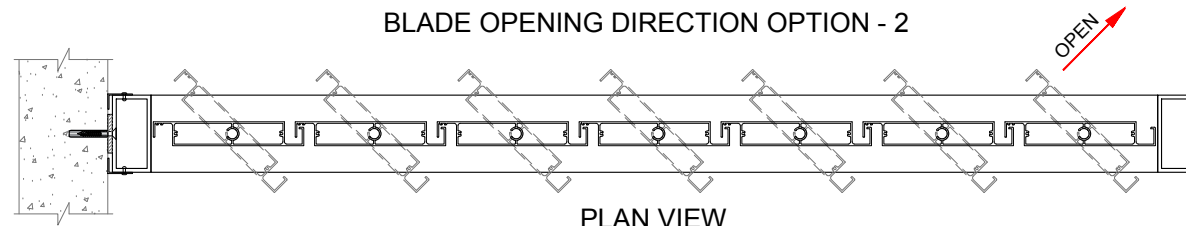


AEROTECH LINEAR 195 - VERTICAL PRIVACY SCREEN - SPECIFICATION

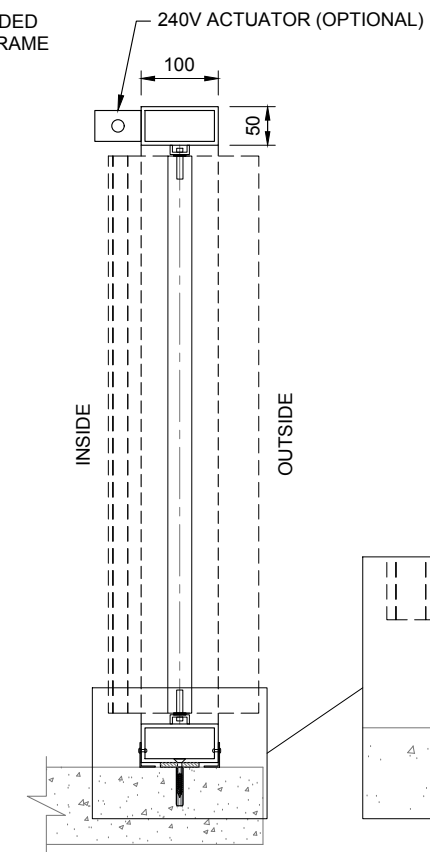
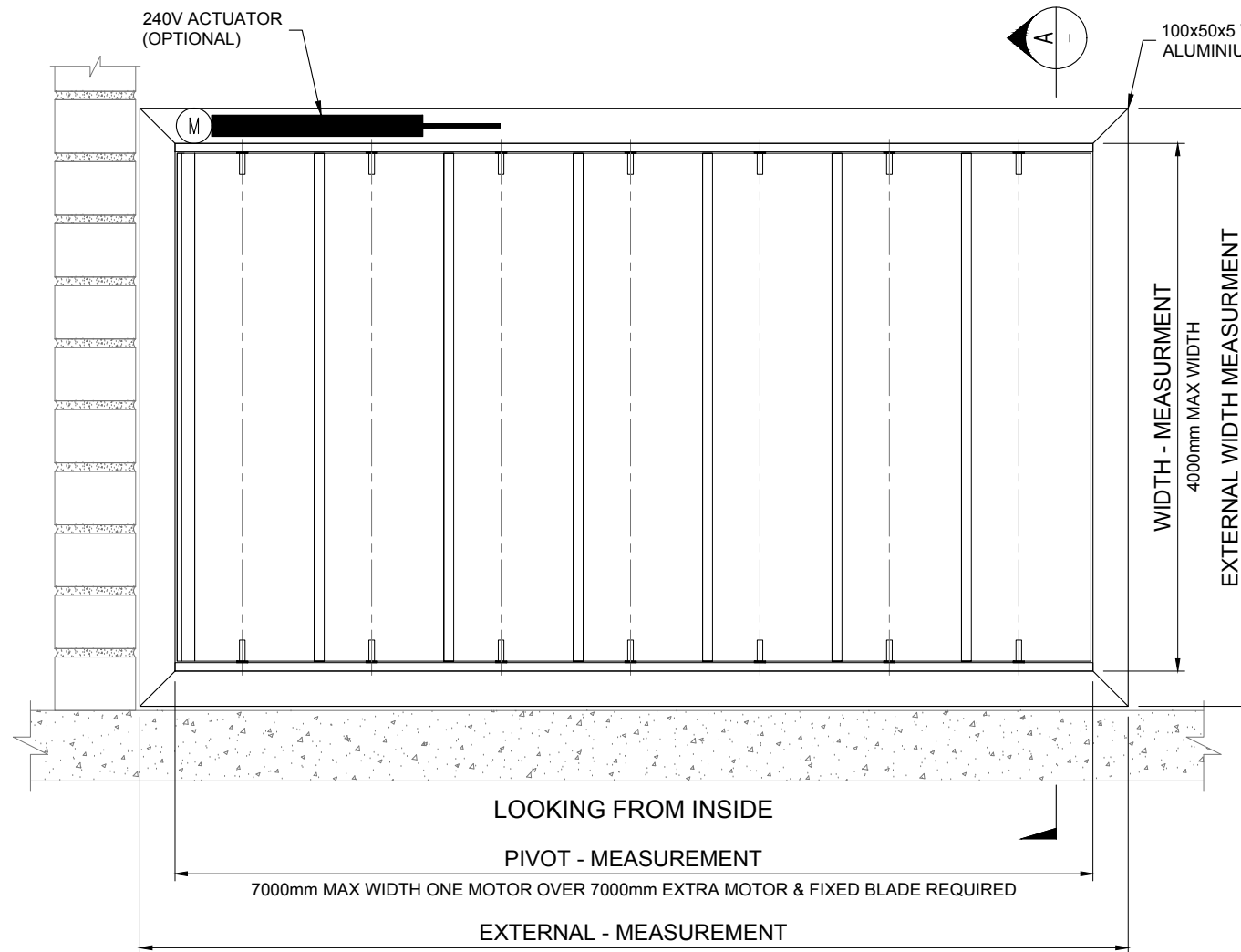
AEROTECH LINEAR 195 MODEL	
BLADE SPECIFICATIONS	
BLADE DESIGN	LINEAR
BLADE DIMENSIONS	195mm x 31mm x 3mm
BLADE MATERIAL	6016 EXTRUDED ALUMINIUM
BLADE FINISH	POWDER COATED OR ANODISED
BLADE CENTRES	184mm
BLADE OPENING	153mm
PIVOT SPECIFICATIONS	
PIVOT TRACK	12mm x 25mm x 3mm
PIVOT TRACK MATERIAL	6061 EXTRUDED ALUMINIUM
PIVOT TRACK FINISH	POWDER COATED OR ANODISED
DRIVE ANGLE SPECIFICATIONS	
DRIVE ANGLE	25mm x 25mm x 3mm
DRIVE ANGLE MATERIAL	6061 EXTRUDED ALUMINIUM
DRIVE ANGLE FINISH	POWDER COATED OR ANODISED
PARTS AND CONNECTOR SPECIFICATIONS	
PIN SET	8mm DIA 316 MARINE GRADE STAINLESS STEEL
SPRING SET	316 MARINE GRADE STAINLESS STEEL
CONNECTOR HOUSING	100% UV STABLE HARDENED NYLON INNER
WEATHER STRIP	PVC STORM INSERTION STRIP
MOTOR & CONTROL SPECIFICATIONS	
MOTOR TYPE	GERMAN MADE LINEAR 240V ACTUATOR
CONTROLS	HARD WIRED OR REMOTE OPERATION
SENSORS	RAIN, WIND & SUN SENSORS



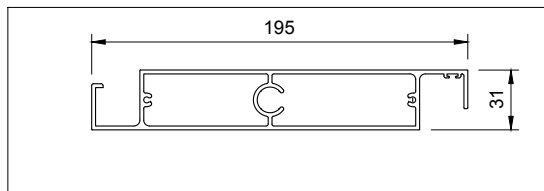
PLAN VIEW
BLADE OPENING DIRECTION OPTION - 2



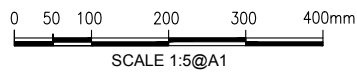
PLAN VIEW
BLADE OPENING DIRECTION OPTION - 1



VIEW - A
SCALE: 1:5@A1



195 LOUVRE BLADE DETAIL
SCALE 1:2 @A1



SCALE 1:5@A1

CLIENT DESIGN / MANUFACTURING APPROVAL:



REV	DATE	ISSUED FOR APPROVAL	DRN	APPR
A	11.05.16	ISSUED FOR APPROVAL	J.P	D.C



Skymax Australia Pty. Ltd.
 SYDNEY OFFICE:
 2/410 Pittwater Rd
 North Manly, NSW 2100 Australia
 Mob +61 4418 844 491
 T +61 2 8041 6258
 Web: skymax.com.au

CLIENT:	SPECIFICATIONS	DATE:	11/05/2016	JOB No:	-
TITLE:	AEROTECH LINEAR 195 VIRTICAL PRIVACY SCREEN	SCALE:	1:5 @A1	DRAWN:	J.P
		CHECKED:	D.CRABB	DRAWING No:	SPEC - 09
				ISSUE/REVISION:	A

ALL DRAWINGS AND TECHNICAL INFORMATION CONTAINED ON THIS PAGE REMAIN THE SOLE PROPERTY OF SKYMAX SERVICES Pty. Ltd. NO INFORMATION CONTAINED ON THIS PAGE IS TO BE REPRODUCED IN PART / IN FULL WITHOUT THE PRIOR CONSENT OF SKYMAX Pty Ltd. SERVICES WRITTEN DIMENSION TO TAKE OVER SCALING. ALL DIMENSION ARE TO BE CONFIRMED ON SITE PRIOR TO FABRICATION / INSTALLATION